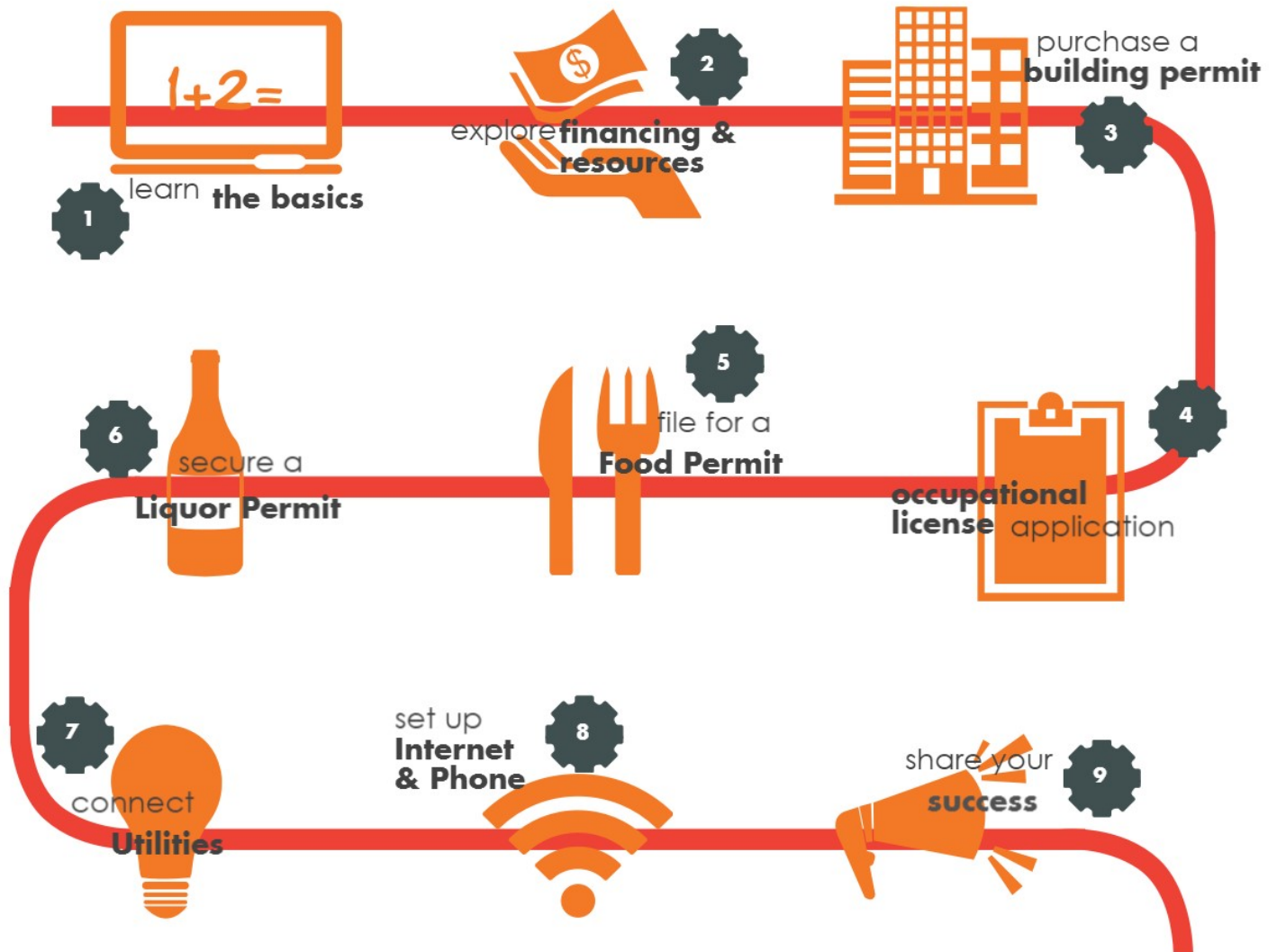


Doing Business in Vermilion

DELCAMBRE, LA



CONTACTS

- 1 LA Small Business Development Center
www.lsbdc.org/ull
(337) 482-6312
lsbdc.ull@lsbdc.org
- 2 Vermilion Economic Development Alliance
www.developvermilion.org
(337) 740-0433
info@developvermilion.org
- 3 City of Delcambre (337) 685-4462
Shirley Wyiles
Iberia Parish Permits (337) 369-4438
Carmen Judice
- 4 City of Delcambre
(337) 685-4462
Shirley Wyiles
*When you register, ask for additional permit requirements

- 5 Vermilion Parish Health Unit or Iberia Parish Health Unit
(337) 893-1443 or (337) 373-0021
LA Department of Health & Hospitals
<http://tinyurl.com/foodbusiness>
tenney.sibley@la.gov
- 6 Refer to Contact #3 & LA Alcohol & Tobacco Control
<http://tinyurl.com/LAalcoholpermit>
(225) 925-4041
Emily.Cassidy@atc.la.gov
- 7 City of Delcambre
(337) 685-4462
Shirley Wyiles
- 8 Delcambre Telephone Company
(337) 685-2311
- 9 Vermilion Chamber of Commerce
www.vermilionchamber.org
(337) 893-2491
connect@vermilionchamber.org

